

Griechische Buchstaben

An Approach to Greek Lettering
Michael A. Covington
Program in Linguistics
The University of Georgia

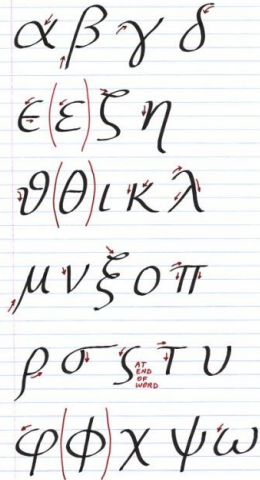
Copyright 2001.
Noncommercial reproduction for
teaching purposes permitted.

This is a system of Greek
hand-lettering that I worked
out as a student in order
to write quickly but legibly.
It is based on the italic handwriting
of Alfred Fairbank and others.

Fundamentally, handwriting is
a system of habitual muscle
movements. Until the student
learns to write each letter in a
quick, consistent way, he or she
will feel dyslexic and not at
home with the alphabet;
ability to memorize words and
paradigms by writing
them will be impaired.

As far as possible,
each lowercase letter
is written with a single stroke.
Alternative forms are given
for some letters.

Lowercase letters



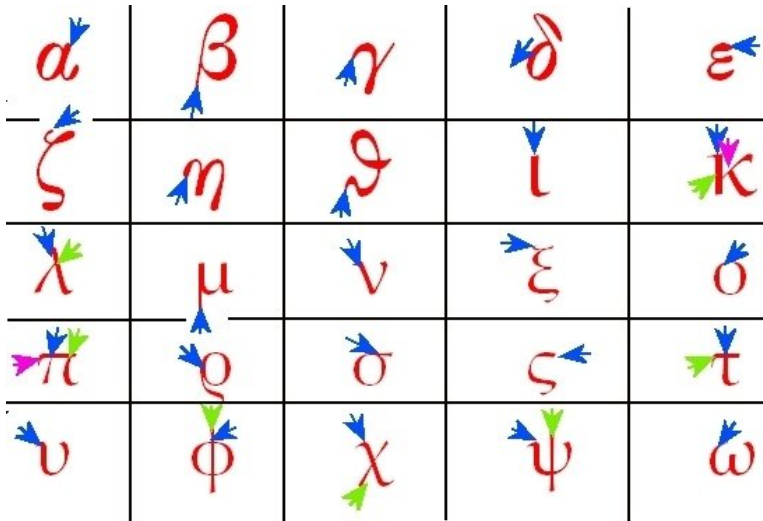
Capital letters



Common error!



When written like a
cursive o, in 2 strokes,
this is not a sigma.
It is a cursive omicron.



→ 1. Zug

→ 2. Zug

→ 3. Zug